

24 NOV 2020

ASX: TMG

ASX ANNOUNCEMENT

Pivotal drilling program commences at Lake Throssell Sulphate of Potash Project, WA

Maiden air-core drilling program now underway to test the highly prospective basal aquifer beneath Lake Throssell

Lake Throssell Sulphate of Potash Project – new high-grade discovery

- The air-core drilling will be the first-ever holes drilled to depth at the Lake Throssell Sulphate of Potash Project, targeting the basal aquifer within the palaeovalley underlying Lake Throssell.
 - *High-grade results of up to 14,500 mg/L SOP were previously encountered in the surficial aquifer.*
- Assays and geological data from the program will be used to calculate a maiden Inferred Mineral Resource for the Lake Throssell Project, subject to results.
- Competition for drill rigs has been strong during the quarter across the WA exploration sector and, as a result of the delayed start to the program, the maiden Mineral Resource estimate is now expected to be released in the first Quarter of 2021.

Trigg Mining is in the unique position of having:

- 100% ownership of this significant sulphate of potash salt lake system, with its recently expanded tenement holdings covering an area of 1,085km².
- Major transport infrastructure located adjacent to the Project with the State and Federal Governments currently sealing the Great Central Road to establish the Outback Highway, connecting Western Australia to the Northern Territory and Queensland, with work underway on the first 40km.

Trigg Mining Limited (ASX: TMG) (Trigg or the Company) is pleased to advise that it has commenced a pivotal air-core drilling program at its highly prospective 100%-owned **Lake Throssell Sulphate of Potash (SOP)** Project, located east of Laverton in Western Australia.

The air-core holes, which will be the first-ever holes to be drilled to depth at Lake Throssell, are designed to define the basal aquifer within the interpreted palaeochannel.

The start of the planned program has been delayed due to the high level of competition for drilling resources across WA in the second half of 2020. As a result, the Company plans to announce the maiden Mineral Resource estimate, subject to results, in the first Quarter of 2021.

This inaugural air-core drilling program will comprise up to 38 core holes (Figure 1). The holes are targeting the basal aquifer, interpreted to be around 130m below surface based on the interpretation of the gravity-gravity surveys. The basal aquifer is expected to lie within the deepest part of the palaeovalley known as the “thalweg”, which is interpreted to be up to 2km wide in places and extends for up to 46km within the current granted tenement and up to 80km through the Project area.

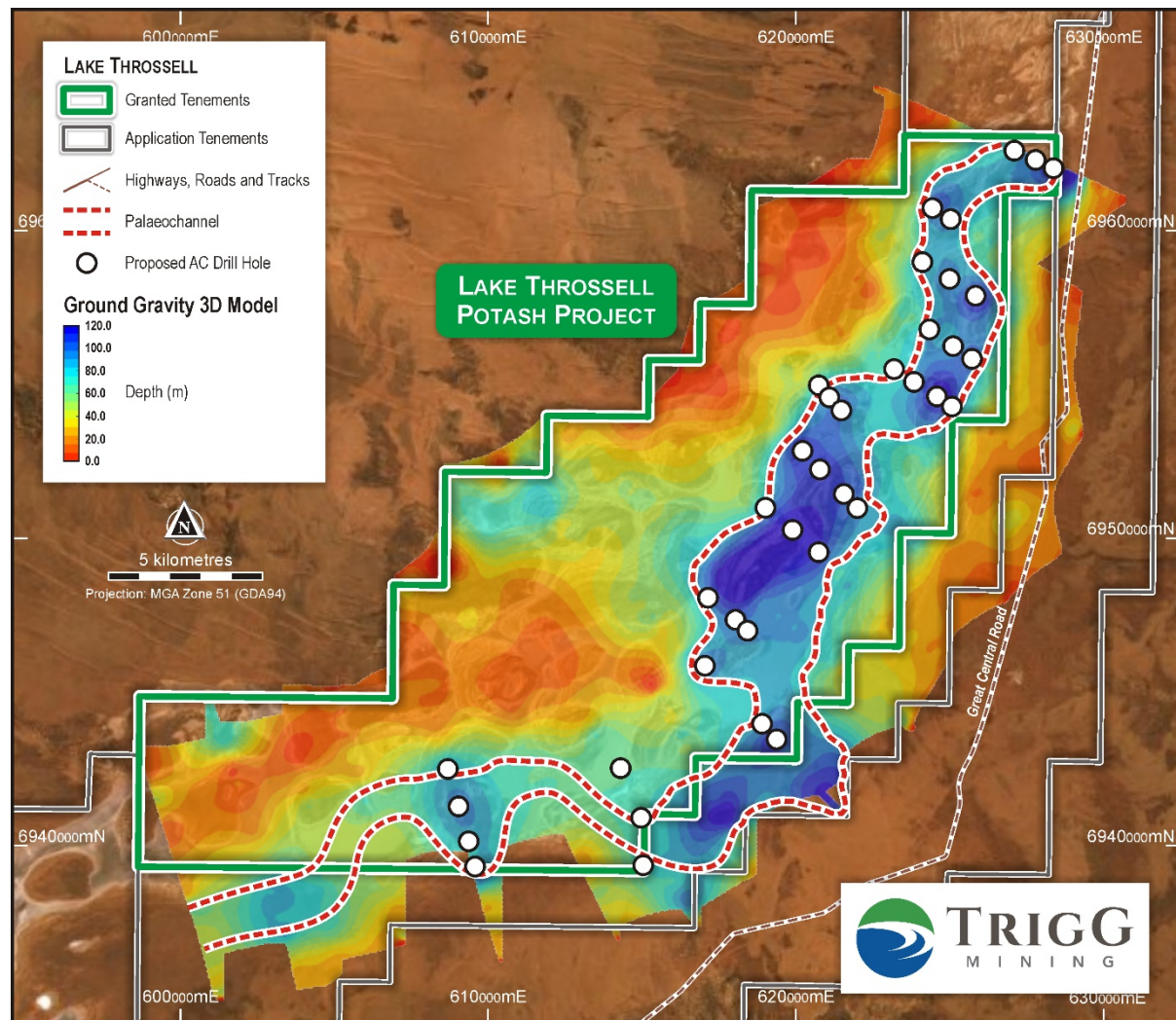


Figure 1: Proposed air-core hole locations at the Lake Throssell Sulphate of Potash Project

Trigg Mining’s Managing Director, Keren Paterson, said: “We are very excited to be drilling the basal aquifer at Lake Throssell, which has been the Company’s primary focus since acquiring the SOP Projects and listing on the ASX in October last year.”

“The results of this program are expected to provide sufficient detail to calculate an Inferred Mineral Resource estimate for Lake Throssell, which will be the second Mineral Resource estimate for the Company since listing – putting Trigg Mining on a clear path towards the development of a significant new Sulphate of Potash production hub east of Laverton in Western Australia.”

This announcement was authorised to be given to ASX by the Board of Directors of Trigg Mining Limited.

Keren Paterson .

Keren Paterson
Managing Director & CEO
Trigg Mining Limited

For more information please contact:

Keren Paterson
Managing Director
[Trigg Mining Limited](#)
(08) 6114 5685
info@triggmining.com.au

Nicholas Read
Investor and Media Relations
[Read Corporate](#)
(08) 9388 1474
nicholas@readcorporate.com.au

